



## **Motorcycle dual-purpose and Adventure South Africa Mpumalanga**

# Motorcycle dual-purpose and Adventure South Africa Mpumalanga

---

**durada**

8 días

**Language**

en,de

**dificultat**

alt

**guia**

Si

**Vehicle de suport**

Si

---

Motorcycle trip to South Africa Discover South Africa on the back of a BMW Gs (the one you want) during 7 days total, 5 days riding, and with a total distance of about 1400 km, we will depart from Pretoria, we will arrive to Swaziland, passing through the Kruger National Park where we can see the big 5 .

Do not miss this motorcycle adventure, which in addition to being exciting, is economical.



### 1 - - Pretòria - 0

Welcome to South Africa! Today is a bonus night, so you can arrive at anytime. Our representative will be waiting for you when you arrive and transfer you to your hotel in Pretoria where you can relax and unwind before your tour starts the next day. Your hotel is surrounded by many interesting shops and world class restaurants.



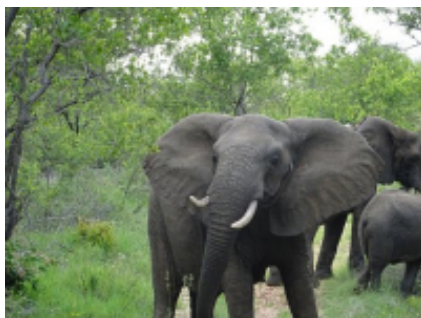
### 2 - Pretòria - Pretòria - 70

This morning we will hand over your motorcycle to you and sign all the paperwork followed by a tour briefing. We start off by taking a short tour of the city of Pretoria to experience all the vibrant colors, sounds and tastes of Africa. We will have lunch in a tavern in a township to taste some local South African food. Afterwards we enjoy a guided motorcycle ride through a BIG 5 nature reserve on our motorcycles! Rhinos, giraffes, impala's and wildebeest can all be spotted from your motorcycle. Tonight we have a welcome dinner in an African Boma.



### 3 - Pretòria - Magoebaskloof - 400

Today you make your way up into Mpumalanga- an area known to local riders as "Biker Paradise". As you head up north, the roads become mountain-ous with beautiful views of the rolling hills below. A highlight is riding Long Tom Pass. Enjoy the great twisties and arrive in Hazyview in the last afternoon.



### 4 - Mpumalanga - Shangana Cultural Village - 250

Today we explore the Panprama Route. The roads here are beautiful and curvy, and there are so many great view points, rock formations and waterfalls along the way. The route includes stops at Bourkes luck potholes, The Three Rondavels, and Gods Window. We will arrive back Hazyview in the late Afternoon and tonight we are booked in for the Shangana Cultural evening, which includes traditional African dances followed by an African feast!



### 5 - Parc Nacional Kruger - Parc Nacional Kruger - 50

This morning you will depart bright and early for a half day safari into the world famous Kruger National Park- you will have a full morning of game viewing. This world famous wildlife reserve is home to the BIG 5 and is roughly the size of a small country. You will have the opportunity to spot lions, elephants, birds and many different species of animals.



### 6 - Hazyview - Swazilàndia - 300

After breakfast we depart for the Kingdom of Swaziland, home of the friendly Swazi people. After border procedures (passport and possibly visa required), we weave our way along winding country roads and mountain passes. Today we visit Swaziland's own glass factory (Ngwenya Glass) and see the world famous Swazi candles being handcrafted at Swazi Candles. We overnight Ezulweni Valley at an excellent country lodge, with its own magnificent restaurant on a wooden deck with spectacular views of execution rock



### **7 - Swazilàndia - Pretòria - 400**

Time to head back to Pretoria. After breakfast we start the journey back! It is a nice relaxing ride through the interior of South Africa

---



### **8 - Pretòria - - 0**

Sadly your tour of South Africa has come to an end. We guarantee that you will take home loads of awesome photographs and fond memories of South Africa the warm people you have met. Transfers will be arranged to the airport.

---

# Motorcycle



**F 700 GS**  
+ \$0.00



**F 800 GS**  
+ \$77.75



**R 1200 GS**  
+ \$290.27

## Dates i preus

## Inclòs



guia



Vehicle de suport



Assegurança bàsica



esmorzar



sopar



hotel



Impostos locals



dinar



mecànic



Moto de lloguer



Entrades Parcs Nacionals



Begudes SENSE Alcohol  
Aigua - Cafè



Gasolina & oli



Moto de recanvi



Trasllat

## no inclòs



Begudes AMB Alcohol



dipòsit fiança



Equip protecció Enduro



Ferris



Mapes & Road Book



On route snacks



Foto - Vídeo record



visats



Equip fred extrem



vols



Devolució moto en origen



Aparcament



propines

Una altra informació

### Despeses de cancel·lació

#### **Important notice, in case of cancellation:**

**The flight tickets, supplements and optional services subscribed in this tour regardless of the basic program, are subject to 100% of early cancellation costs.**