



**Motorcycle dual-purpose and Adventure
Cape to Cape, from Alicante to Fisterra
Enduro off Road 100%**

Motorcycle dual-purpose and Adventure Cape to Cape, from Alicante to Fisterra

Enduro off Road 100%

Duration

10 días

Difficulty

Normal-Hard

Support vehicle

Ja

Language

en,es,fr

Guide

Ja

The most unprecedented and fantastic enduro or trail motorcycle trip you can do! It perfectly combines the difficulty of the stages and crosses the entire Iberian Peninsula through the most incredible landscapes, from the Mediterranean in Alicante, to the Atlantic in Galicia. The elaborate route, exclusively for enduro motorcycles, will surprise you every meter you do on it. The Sierra Aitana, Albarracín, Valdezcaray, Montes de Oca, Riaño, Piedrafita, Pajares, Cangas de Narcea, Lugo, Santiago and Fisterra overwhelm when imagining a route like this. Very well selected accommodation and gastronomy so that the end of the daily stage is worth it!





1 - Calp - Calp - 0

Meeting in Calpe reception of participants from 7:00 p.m. Formalities and briefing ..



2 - Calp - Requena - 254

Stage 1 Calpe (Alicante) - Requena (Valencia) - 254 KM



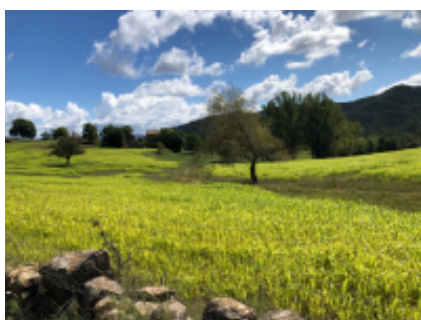
3 - Requena - Gallocanta - 231

Stage 2 Requena (Valencia) - Bellos (Gallocanta) (Zaragoza) - 231KM



4 - Gallocanta - Villoslada de Cameros - 274

Stage 3 Bellos (Gallocanta-Zaragoza) - Villoslada de Cameros (La Rioja) - 274 KM



5 - Villoslada de Cameros - Aguilar de Campoo - 279

Stage 4 Villoslada de Cameros (La Rioja) - Aguilar de Campoo (Palencia) -279 KM

6 - Aguilar de Campoo - Lugueros - 214

Stage 5 Aguilar de Campoo (Palencia) - Lugueros (León) -214 KM



7 - Lugueros - Cangas del Narcea - 266

Stage 6 Lugueros (León) - Cangas de Narcea (Asturias) -266 KM



8 - Cangas del Narcea - Eidián - 239

Stage 7 Cangas de Narcea (Asturias) - Eidian (Pontevedra) -239 KM



9 - Eidián - Fisterra - 167

Stage 8 Eidian (Pontevedra) - Fisterra (A Coruña) -167 KM



10 - Fisterra - Fisterra - 0

Today is the last day, after breakfast everyone is free to go home as and when they want. As it is an enduro route, each client must find a way to go home. If it is a group of friends, we can find a transport for the motorcycles (Extra price that we must consult)



Motorcycle



CRF 250 L
+ \$970.91



XT 660 R
+ \$970.91



My own motorbike
+ \$0.00

Dates & prices

	2x people, 1x motorcycle in double room	2x people, 2x motorcycles in double room	1x person, 1x motorcycle in single room
01-Apr-2025 - 31-Oct-2025	Not available	\$1,823.16	\$2,146.79

Options

Included



Guide



Support vehicle



Helm voor de bestuurder



Helm voor de passagier?



Breakfast



Dinner

Except first and last dinner



Hotel



Mechanic



Parking

Not included

	Alcoholic beverages		Basic insurance
	Damage deposit		Enduro body protection kit
	Extreme cold protection kit		Ferrys
	Flights		Local taxes
	Lunch		Maps & Roadbook
	Motorcycle rental		Motorcycle return to origin
	National parks tickets		Non-Alcoholic beverages water-coffee
	On route snacks		Petrol & oil
	Photo-video souvenir		Spare motorcycle
	Tips		Transfers
	Visas		

Other information

MOTOS ACEPTADAS, NEUMÁTICOS y EQUIPO PILOTO Motocicletas ENDURO hasta 600 Autonomía mínima 125 Km. Neumáticos enduro de tacos. Equipo piloto completo 100% enduro. Traje de agua y farmacia personal Equipaje manejable y ropa cómoda

DOCUMENTACION NECESARIA Carnet de conducir. Seguro de viaje y accidente. Seguro del vehículo. Permiso circulación vehículo. Ficha técnica vehículo.

Kosten bij vroege annulering

Important notice, in case of cancellation:

The flight tickets, supplements and optional services subscribed in this tour regardless of the basic program, are subject to 100% of early cancellation costs.